

Picture Analysis

Dear dogowner,

A total of 8 images will appear in the questionnaires of the Veterinary Chamber of Westphalia-Lippe, which will be repeated in the following 64 questionnaires. Since many dog owners find it difficult to interpret these individual images, we would like to offer support to our customers and clients.

Kindly note that this is a simplified analysis intended for the dog owner and not for a dog trainer (who should be able to analyze the pictures in more detail). The images/questions are excerpts from the official original forms of the Veterinary Chamber of Westphalia-Lippe.

You will receive access to the complete image analysis, with all 8 images, after booking and full payment.

If you have any questions, please do not hesitate to call us.

Kind regards

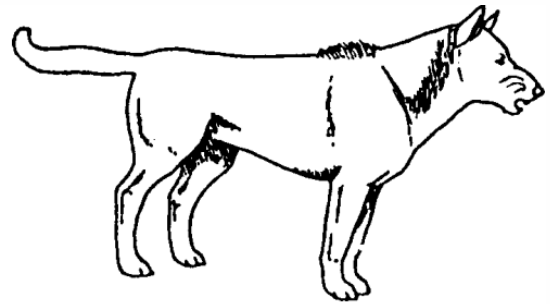
Caroline Hegebüscher

© Copyright on all pages: Caroline Hegebüscher/Mobile Hundeerziehung



1. What expression is this dog showing?

- A. The dog is neutral to alert.
- B. The dog is fearful.
- C. The dog is confidently threatening.
- D. The dog is submissive.



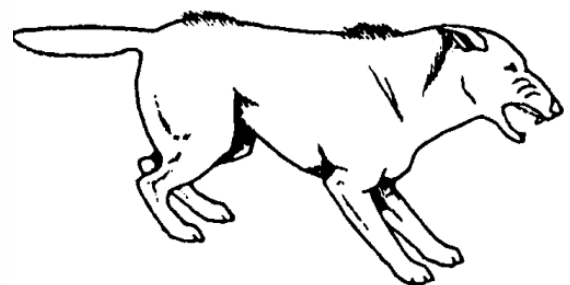
Only answer **C** is correct.

What does the picture show? The hackles are erect, all 4 paws are pushed through, fixed gaze, the mouth gap is slightly open, the tail is set horizontally, the tip of the tail is slightly bent, the whiskers are curled, back is straight, the ears are erect and directed forward, and the neck is extended.

Analysis: A neutral to alert posture can probably be ruled out immediately by anyone (a neutral to alert dog is shown as a comparison in the last picture #8). If the dog were to be fearful or submissive, the ears, the hips and the tail would be bent rather as shown in picture No. 4 and 5. Thus only answer C remains plausible.

2. What expression is this dog showing?

- A. The dog is neutral to alert.
- B. The dog is threatening out of insecurity.
- C. The dog is peaceable.
- D. The dog is submissive.



Only answer **B** is correct.

What does the picture show? Hair erected, crouched posture, horizontal tail (without kink in tip), straight back, whiskers curled, muzzle wide open and ears laid back.

Analysis: Anyone can probably immediately rule out a neutral to alert posture (a neutral to alert dog is in picture 8). If the dog were amiable, he would hardly appear so tense and open muzzled in a threatening manner. If he were submissive, the ears, hips and tail would be more angled in, as visualized in pictures No. 4 and No. 5. This leaves only answer B as plausible.

